

Accessori impianti sprinkler
sprinkler system accessories



Camera di ritardo, ricambio per impianti ad umido.

Delay chamber, wet system replacement.

Art. Art.	Versione Version	€ cad
GC216	FM	450,00
GC223	CPF	299,00



Campana Idraulica di allarme.

Hydraulic bell.

Art. Art.	Versione Version	€ cad
GC222	CPF	370,00



Interruttore di stato per saracinesche OSYSU.

Position switch, OSYSU.

Art. Art.	Versione Version	Contatti Contacts	€ cad
GC218	OSYSU-1	1	253,00
GC219	OSYSU-2	2	271,00



Il pressostato segnala tempestivamente il funzionamento dell'impianto attivando allarmi a distanza; attiva o disattiva altre apparecchiature. Munito di contatto Nc e Na.

The pressure switch indicates in time that the system is working by operating remote alarms; it activates or deactivates other equipments. Equipped with Nc and Na contact.

Art. Art.	Versione Version	Contatti Contacts	€ cad
GC006	standard PS10-1A	1	217,00
GC007	standard PS10-2A	2	274,00
GC009	standard PS40-1A	1	217,00
GC010	standard PS40-2A	2	263,00



Il flussostato è un dispositivo che segnala il flusso dell'acqua che scorre nelle tubazioni chiudendo un contatto elettrico. Con ritardo max 90 sec.

The FLOWMETER indicates the water flow flowing in the tubes by closing an electric contact. With max 90 seconds delay.

Art. Art.	Connessione Connection	Ø	€ cad
GC014	filettata / threaded	1"	418,00
GC095	filettata / threaded	1" ¼	418,00
GC096	filettata / threaded	1" ½	418,00
GC097	presa a staffa / mechanical tee	2"	405,00
GC098	presa a staffa / mechanical tee	2" ½	405,00
GC099	presa a staffa / mechanical tee	3"	405,00
GC100	presa a staffa / mechanical tee	4"	405,00
GC101	presa a staffa / mechanical tee	6"	405,00
GC102	presa a staffa / mechanical tee	8"	460,00
GC103	presa a staffa / mechanical tee	10"	1.136,00

Accessori impianti sprinkler
sprinkler system accessories

Art. Art.	Versione Version	€ cad
GC017	rubinetto 3 vie / 3 way valve	22,00
GC220	manom. acqua/aria / pressure gauge air/water	80,00
GC224	valv. porta manom. / pressure gauge holder valve	15,00
GC225	manometro acqua / pressure gauge water	59,00

Manometri e rubinetti portamanometro per valvole di allarme

Pressure gauges and pressure gauges holder valve.



Art. Art.	Connessione Connection	Ø	€ cad
GC018	Flangiata / flanged PN 16	2" ½	600,00
GC019	Flangiata / flanged PN 16	3"	710,00
GC020	Flangiata / flanged PN 16	4"	830,00
GC021	Flangiata / flanged PN 16	6"	1.250,00
GC022	Flangiata / flanged PN 16	8"	2.050,00
GC023	Flangiata / flanged PN 16	10"	2.800,00
GC024	Flangiata / flanged PN 16	12"	4.000,00

Saracinesca O&Y vite esterna asta uscente certificate UL-FM.

O & Y GATE VALVE outside screw, outgoing stem UL-FM approved.



Art. Art.	Connessione Connection	Ø	€ cad
GC230	filettata / threaded	1"	a richiesta / on request
GC231	filettata / threaded	1" ¼	a richiesta / on request
GC232	filettata / threaded	1" ½	a richiesta / on request
GC233	filettata / threaded	2"	a richiesta / on request
GC234	filettata / threaded	2" ½	a richiesta / on request

Valvola a farfalla UL-FM in ottone con uscita filettata. Comprensiva di riduttore di sforzo, micro ed indicatore di posizione.

Threaded brass butterfly valve with position indicator, including reducer effort and switch. UL-FM approved.



Art. Art.	Connessione Connection	Ø	€ cad
GC061	Wafer	2" ½	530,00
GC062	Wafer	3"	545,00
GC063	Wafer	4"	610,00
GC064	Wafer	6"	890,00
GC065	Wafer	8"	1.130,00

Valvola a farfalla UL-FM con uscita wafer. Comprensiva di riduttore di sforzo, micro ed indicatore di posizione.

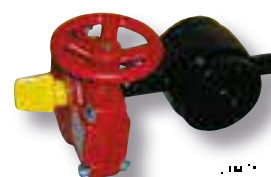
Wafer butterfly valve with position indicator, including reducer effort and switch. UL-FM approved.



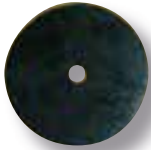
Art. Art.	Connessione Connection	Ø	€ cad
GC066	scanalata / grooved	2" ½	530,00
GC067	scanalata / grooved	3"	545,00
GC068	scanalata / grooved	4"	610,00
GC069	scanalata / grooved	6"	890,00
GC070	scanalata / grooved	8"	1.130,00

Valvola a farfalla UL-FM con uscita scanalata. Comprensiva di riduttore di sforzo, micro ed indicatore di posizione.

Grooved butterfly valve with position indicator, including reducer effort and switch. UL-FM approved.



Accessori impianti sprinkler
sprinkler system accessories



Set guarnizioni per valvola a secco, valvola ad umido, valvola a diluvio. Accessori di ricambio per il clapet e per lo sportello di ispezione.

Gasket set for dry valve, wet valve, deluge valve.

Accessory parts for the clapet and the inspection hatch.



Art. Art.	Versione Version	Ø	€ cad
GC046	secco / dry	2" ½	a richiesta / on request
GC047	secco / dry	4"	a richiesta / on request
GC048	secco / dry	6"	a richiesta / on request
GC049	umido / wet	2" ½	a richiesta / on request
GC050	umido / wet	3"	a richiesta / on request
GC051	umido / wet	4"	a richiesta / on request
GC052	umido / wet	6"	a richiesta / on request
GC053	umido / wet	8"	a richiesta / on request
GC058	diluvio / deluge	2" ½	a richiesta / on request
GC059	diluvio / deluge	4"	a richiesta / on request
GC060	diluvio / deluge	6"	a richiesta / on request



Valvola a sfera filettata in ottone cromato. Approvata FM

Threaded brass chrome ball valve. Approved FM

Art. Art.	Connessione Connection	Ø	€ cad
GC401	filettata / threaded	1/2"	10,50
GC402	filettata / threaded	3/4"	15,50
GC403	filettata / threaded	1"	24,00
GC404	filettata / threaded	1" ¼	33,90
GC405	filettata / threaded	1" ½	50,00
GC406	filettata / threaded	2"	75,50



Valvola di non ritorno scanalata. Approvata UL/FM

Grooved swing check valve. Approved UL/FM

Art. Art.	Connessione Connection	Ø	€ cad
GC407	scanalata / grooved	2"	248,00
GC408	scanalata / grooved	2" ½	282,00
GC409	scanalata / grooved	3"	308,00
GC410	scanalata / grooved	4"	376,00
GC411	scanalata / grooved	6"	705,00
GC412	scanalata / grooved	8"	1.239,00
GC413	scanalata / grooved	10"	2.477,00

Accessori impianti sprinkler
sprinkler system accessories

Art. Art.	Pezzi Pieces	Versione Version	€ cad
GC088	12	1/2" - 3/4"	46,00
GC089	24	1/2" - 3/4"	59,00

Cassetta manutenzione sprinkler in lamiera verniciata idonea a ricevere un kit base secondo varie temperature e caratteristiche pronti per la sostituzione in caso di precedente utilizzo.



Sprinkler painted iron sheet service cabinet suitable for a standard kit according to different temperatures and characteristics, ready to be replaced if previously used.

Art. Art.	Versione Version	€ cad
GC091	1/2" - 3/4"	20,00

Chiave serraggio sprinkler (Design CPF).

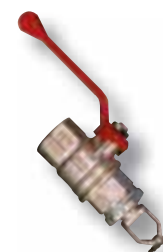
Sprinkler tightening.



Art. Art.	Versione Version	€ cad
GC093	1" x 1/2"	45,00
GC094	1" x 3/4"	70,00

Impianto prova sprinkler dotato di una valvola a sfera che consente la verifica dell'impianto non certificato.

Sprinkler trial system no certificate.



Art. Art.	Versione Version	€ cad
GC393	1" x 1/2"	437,00
GC392	1" x 3/4"	455,00

Dispositivo di prova test and drain certificato FM.

Test and Drain valve - Approved FM.



Art. Art.	Versione Version	€ cad
GC394	1" x 1/2"	210,00
GC395	1" x 3/4"	220,00

Dispositivo di prova e drenaggio impianto, attacchi filettati gas, manometro 0-25 bar.

Test device and drainage system, threaded connection, 0.25 bar gauge.



Art. Art.	Pollici Inch	€ cad
LC 166	3/4"	1,00
LC 146	1"	1,10
LC 147	1 1/4"	1,20
LC 148	1 1/2"	1,30
LC 149	2"	1,50
LC 150	2 1/2"	2,50
LC 151	3"	3,10
LC 152	4"	3,90

Collare pensile per tubazioni sprinkler con attacco M10.

Collar hanging sprinkler pipe with connection M10.



Tubazioni flessibili - giunti antivibranti

Flexible sprinkler connections - U flex expansion loops



Tubazioni flessibili per impianti sprinkler omologate FM. Comprensivo di tubazione in acciaio inox, connessioni filettate, barra di supporto e N. 2 staffe.

Flexible sprinkler connections FM approved. It is made up of: steel pipe, bar mounting and two clamps.

Art. Art.	Entrata Inlet	Uscita Outlet	Versione Version	€ cad
GC300	1"	1/2"	780 mm	32,00
GC301	1"	1/2"	1000 mm	36,00
GC302	1"	1/2"	1220 mm	39,00
GC303	1"	1/2"	1540 mm	44,00
GC311	1"	3/4"	780 mm	32,00
GC312	1"	3/4"	1000 mm	36,00
GC313	1"	3/4"	1220 mm	39,00
GC314	1"	3/4"	1540 mm	44,00



I giunti antisismici flangiati PN16 in AISI 316L rivestiti in AISI 304 sono utilizzati per assorbire vibrazioni e movimenti causati da terremoti, muovendosi in 6 direzioni differenti riescono a garantire la continuità e l'integrità dell'impianto.

The PN16 earthquake-proof joints in AISI316L covered in AISI304 are used to absorb vibrations and movements caused by earthquakes. Moving in 6 different directions are able to guarantee the continuity and integrity of the system.

Art. Art.	DN	Tipo Type	€ cad
GC320	25	Flangiato / Flanged	592,00
GC321	32	Flangiato / Flanged	685,00
GC322	40	Flangiato / Flanged	751,00
GC323	50	Flangiato / Flanged	872,00
GC324	65	Flangiato / Flanged	1.077,00
GC325	80	Flangiato / Flanged	1.238,00
GC326	100	Flangiato / Flanged	1.630,00
GC327	125	Flangiato / Flanged	2.176,00
GC328	150	Flangiato / Flanged	2.898,00
GC329	200	Flangiato / Flanged	4.316,00



I giunti antisismici scanalati in AISI 316L rivestiti in AISI 304 sono utilizzati per assorbire vibrazioni e movimenti causati da terremoti, muovendosi in 6 direzioni differenti riescono a garantire la continuità e l'integrità dell'impianto.

The grooved earthquake-proof joints in AISI316L covered in AISI304 are used to absorb vibrations and movements caused by earthquakes. Moving in 6 different directions are able to guarantee the continuity and integrity of the system.

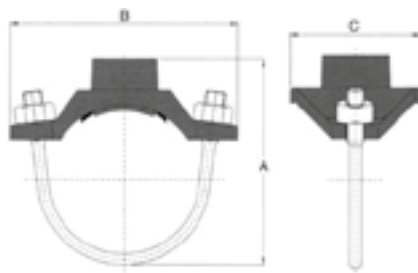
Art. Art.	DN	Tipo Type	€ cad
GC330	25	Scanalato / Grooved	358,00
GC331	32	Scanalato / Grooved	500,00
GC332	40	Scanalato / Grooved	592,00
GC333	50	Scanalato / Grooved	696,00
GC334	65	Scanalato / Grooved	851,00
GC335	80	Scanalato / Grooved	931,00
GC336	100	Scanalato / Grooved	1.230,00
GC337	125	Scanalato / Grooved	1.739,00
GC338	150	Scanalato / Grooved	2.394,00
GC339	200	Scanalato / Grooved	3.636,00

Raccorderia scanalata

Grooved piping system UL-FM

Attacchi rapidi PN16 per sprinkler con guarnizioni in epdm, pressione di esercizio fino a 20 bar.

U-bolt PN16 for sprinkler with epdm gaskets, working pressure up to 20 bar.

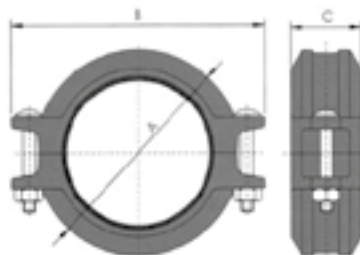


Art. Art.	DN	Pollici Inch	mm B	mm C	Foro Hole	€ cad
LC001	32 x 15	1"¼ x ½"	88,9	57,2	30 ÷ 32	6,60
LC002	32 x 20	1"¼ x ¾"	88,9	57,2	30 ÷ 32	6,60
LC003	32 x 25	1"¼ x 1"	88,9	57,2	30 ÷ 32	6,60
LC004	40 x 15	1"½ x ½"	88,9	57,2	30 ÷ 32	6,90
LC005	40 x 20	1"½ x ¾"	88,9	57,2	30 ÷ 32	6,90
LC006	40 x 25	1"½ x 1"	88,9	57,2	30 ÷ 32	6,90

Art. Art.	DN	Pollici Inch	mm B	mm C	Foro Hole	€ cad
LC007	50 x 15	2" x ½"	95,3	57,2	30 ÷ 32	7,40
LC008	50 x 20	2" x ¾"	95,3	57,2	30 ÷ 32	7,40
LC009	50 x 25	2" x 1"	95,3	57,2	30 ÷ 32	7,40
LC010	65 x 15	2"½ x ½"	108	57,2	30 ÷ 32	10,10
LC011	65 x 20	2"½ x ¾"	108	57,2	30 ÷ 32	10,10
LC012	65 x 25	2"½ x 1"	108	57,2	30 ÷ 32	10,10

Giunti rigidi PN16 con guarnizioni in epdm, pressione di esercizio fino a 34 bar.

Rigid coupling PN16 with epdm gaskets, working pressure up to 34 bar.

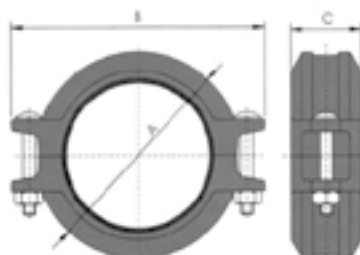


Art. Art.	DN	Pollici Inch	mm B	mm C	€ cad
LC013	25	1"	100	44	7,00
LC014	32	1"¼"	105	45	7,00
LC015	40	1"½"	112	45	7,50
LC016	50	2"	130	45	7,90
LC017	65	2"½"	145	45	8,80

Art. Art.	DN	Pollici Inch	mm B	mm C	€ cad
LC018	80	3"	168	46	10,50
LC019	100	4"	200	52	13,50
LC020	125	5"	235	52	21,00
LC021	150	6"	265	52	24,50
LC022	200	8"	345	62	43,20

Giunti flessibili PN16 con guarnizioni in epdm, pressione di esercizio fino a 34 bar.

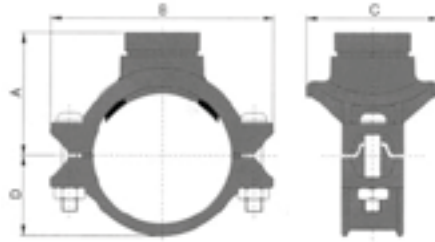
Flexible coupling PN16 with epdm gaskets, working pressure up to 34 bar.



Art. Art.	DN	Pollici Inch	mm B	mm C	€ cad
LC023	25	1"	92	42	7,00
LC024	32	1"¼"	104	44	7,00
LC025	40	1"½"	110	44	7,50
LC026	50	2"	124	45	7,90
LC027	65	2"½"	145	45	8,80

Art. Art.	DN	Pollici Inch	mm B	mm C	€ cad
LC028	80	3"	160	45	10,50
LC029	100	4"	198	50	13,50
LC030	125	5"	228	51	21,00
LC031	150	6"	265	52	24,50
LC032	200	8"	350	60	43,20

Raccorderia scanalata
Grooved piping system UL-FM



Presca a staffa scanalata PN16 con guarnizioni in epdm, pressione di esercizio fino a 20 bar.

Grooved mechanical tee PN16 with epdm gaskets, working pressure up to 20 bar.

Art. Art.	DN	Pollici Inch	mm B	mm C	Foro Hole	€ cad
LC033	50 x 32	2" x 1"¼	116	76	51 ÷ 54	17,40
LC034	50 x 40	2" x 1"½	116	76	51 ÷ 54	17,40
LC036	65 x 32	2"½ x 1"¼	144	84,5	51 ÷ 54	22,40
LC037	65 x 40	2"½ x 1"½	137	84,5	51 ÷ 54	22,40
LC038	80 x 32	3" x 1"¼	152	85,5	51 ÷ 54	25,00
LC039	80 x 40	3" x 1"½	152	85,5	51 ÷ 54	25,00
LC040	80 x 50	3" x 2"	152	98	64 ÷ 67	25,30
LC042	100 x 40	4" x 1"½	188	89	51 ÷ 54	32,00
LC043	100 x 50	4" x 2"	188	104,5	64 ÷ 67	32,00

Art. Art.	DN	Pollici Inch	mm B	mm C	Foro Hole	€ cad
LC044	105 x 65	4" x 2"½	188	104,5	70 ÷ 73	34,00
LC045	105 x 80	4" x 3"	209	124	89 ÷ 92	39,70
LC047	125 x 40	5" x 1"½	212	112,5	51 ÷ 54	42,50
LC048	125 x 50	5" x 2"	212	112,5	64 ÷ 67	42,50
LC051	150 x 50	6" x 2"	247	114	64 ÷ 67	42,00
LC052	150 x 65	6" x 2"½	247	115	70 ÷ 73	42,30
LC053	150 x 80	6" x 3"	247	132	89 ÷ 92	45,40
LC054	150 x 100	6" x 4"	247	156,5	114 ÷ 117	51,20

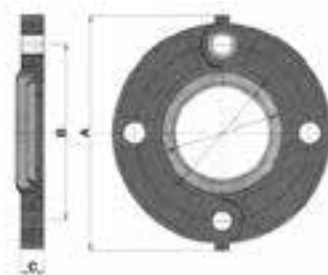


Riduzione concentrica scanalata PN16, pressione di esercizio fino a 34 bar.

Concentric reductions PN16, working pressure up to 34 bar.

Art. Art.	DN	Pollici Inch	mm A	€ cad
LC097	50 x 40	2" x 1"½	64	6,80
LC098	65 x 50	2"½ x 2"	64	8,80
LC099	80 x 50	3" x 2"	64	11,50
LC100	80 x 65	3" x 2"½	64	11,50
LC101	100 x 50	4" x 2"	76	16,20
LC102	100 x 65	4" x 2"½	76	16,20

Art. Art.	DN	Pollici Inch	mm A	€ cad
LC103	100 x 80	4" x 3"	76	16,20
LC104	125 x 100	5" x 4"	89	29,80
LC105	150 x 50	6" x 2"	102	37,00
LC106	150 x 65	6" x 2"½	102	37,00
LC107	150 x 80	6" x 3"	102	37,50
LC108	150 x 100	6" x 4"	102	37,50



Adattatore a flangia PN16, pressione di esercizio fino a 20 bar.

Flange PN16, working pressure up to 20 bar.

Art. Art.	DN	Pollici Inch	mm A	mm C	€ cad
LC090	50	2"	220	24	24,80
LC091	65	2"½	235	24	28,90
LC092	80	3"	252	24	32,90
LC093	100	4"	280	24,5	55,50

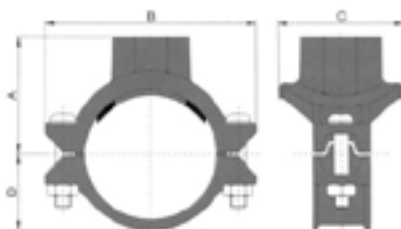
Art. Art.	DN	Pollici Inch	mm A	mm C	€ cad
LC094	125	5"	346	25,5	67,00
LC095	150	6"	346	25,5	83,20
LC096	200	8"	414	30	114,90

Raccorderia scanalata

Grooved piping system UL-FM

Presa a staffa filettata PN16 con guarnizioni in epdm, pressione di esercizio fino a 20 bar.

Threaded mechanical tee PN16 with epdm gaskets, working pressure up to 20 bar.



Art. Art.	DN	Pollici Inch	mm B	mm C	Foro Hole	€ cad
LC055	50 x 15	2" x 1/2"	116	68	38 ÷ 40	15,10
LC056	50 x 20	2" x 3/4"	116	68	38 ÷ 40	15,10
LC057	50 x 25	2" x 1"	116	68	38 ÷ 40	15,10
LC058	50 x 32	2" x 1 1/4"	116	76	51 ÷ 54	17,60
LC059	50 x 40	2" x 1 1/2"	116	76	51 ÷ 54	17,60
LC060	65 x 15	2 1/2" x 1/2"	137	71	38 ÷ 40	20,30
LC061	65 x 20	2 1/2" x 3/4"	137	71	38 ÷ 40	20,30
LC062	65 x 25	2 1/2" x 1"	137	71	38 ÷ 40	20,30
LC063	65 x 32	2 1/2" x 1 1/4"	137	84,5	51 ÷ 54	23,00
LC064	65 x 40	2 1/2" x 1 1/2"	137	84,5	51 ÷ 54	23,00
LC065	80 x 15	3" x 1/2"	152	72,5	38 ÷ 40	21,80
LC066	80 x 20	3" x 3/4"	152	72,5	38 ÷ 40	21,80
LC067	80 x 25	3" x 1"	152	72,5	38 ÷ 40	21,80
LC068	80 x 32	3" x 1 1/4"	152	85,5	51 ÷ 54	25,00
LC069	80 x 40	3" x 1 1/2"	152	85,5	51 ÷ 54	25,00
LC070	80 x 50	3" x 2"	152	98	64 ÷ 67	25,00
LC071	100 x 15	4" x 1/2"	188	78,5	38 ÷ 40	27,20

Art. Art.	DN	Pollici Inch	mm B	mm C	Foro Hole	€ cad
LC072	100 x 20	4" x 3/4"	188	78,5	38 ÷ 40	27,20
LC073	100 x 25	4" x 1"	188	78,5	38 ÷ 40	27,20
LC074	100 x 32	4" x 1 1/4"	188	89	51 ÷ 54	29,00
LC075	100 x 40	4" x 1 1/2"	188	89	51 ÷ 54	29,00
LC076	100 x 50	4" x 2"	188	104,5	64 ÷ 67	29,00
LC077	100 x 65	4" x 2 1/2"	188	104,5	70 ÷ 73	29,80
LC078	100 x 80	4" x 3"	188	124	89 ÷ 92	33,60
LC079	125 x 32	5" x 1 1/4"	221,5	93	51 ÷ 50	40,60
LC080	125 x 40	5" x 1 1/2"	221,5	93	51 ÷ 50	40,60
LC081	125 x 50	5" x 2"	221,5	112,5	64 ÷ 67	40,60
LC082	150 x 32	6" x 1 1/4"	247	95	51 ÷ 54	41,90
LC083	150 x 40	6" x 1 1/2"	247	95	51 ÷ 54	41,90
LC084	150 x 50	6" x 2"	247	112,5	64 ÷ 67	41,90
LC085	150 x 65	6" x 2 1/2"	247	112,5	70 ÷ 73	44,50
LC086	150 x 80	6" x 3"	247	132	89 ÷ 92	51,20
LC087	150 x 100	6" x 4"	247	156,5	114 ÷ 117	53,20

Tappo scanalato PN16, pressione di esercizio fino a 34 bar.

End cup PN16, working pressure up to 34 bar.

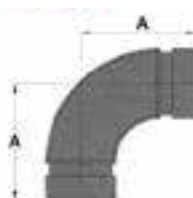


Art. Art.	DN	Pollici Inch	mm A	€ cad
LC137	40	1 1/2"	23,5	4,00
LC138	50	2"	23,5	4,00
LC139	65	2 1/2"	25,5	5,50
LC140	80	3"	25,5	6,50

Art. Art.	DN	Pollici Inch	mm A	€ cad
LC141	100	4"	27	10,10
LC142	125	5"	27	19,10
LC143	150	6"	24,5	23,80
LC144	200	8"	30,5	39,00

Curva scanalata 90° PN16, pressione di esercizio fino a 20 bar.

Grooved Elbow 90° PN16, working pressure up to 20 bar.



Art. Art.	DN	Pollici Inch	mm	€ cad
LC109	32	1 1/4"	42,4	6,40
LC110	40	1 1/2"	48,3	6,70
LC111	50	2"	60,3	7,90
LC112	65	2 1/2"	76,1	11,20
LC113	80	3"	88,9	15,56

Art. Art.	DN	Pollici Inch	mm	€ cad
LC114	100	4"	114,3	22,00
LC115	125	5"	141,3	46,60
LC116	150	6"	168,3	50,50
LC117	200	8"	219,1	124,00

Raccorderia scanalata

Grooved piping system UL-FM



Curva scanalata 45° PN16, pressione di esercizio fino a 20 bar.

Grooved Elbow 45° PN16, working pressure up to 20 bar.

Art. Art.	DN	Pollici Inch	mm A	€ cad
LC119	40	1"½	44,5	6,80
LC120	50	2"	51	7,80
LC121	65	2"½	57	10,70
LC122	80	3"	63,5	15,60

Art. Art.	DN	Pollici Inch	mm A	€ cad
LC123	100	4"	76	23,00
LC124	125	5"	82,5	55,30
LC125	150	6"	89	55,5
LC126	200	8"	108	127,5

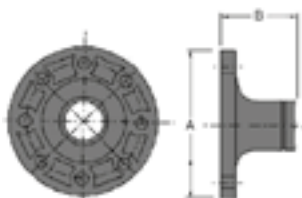


Tee scanalato PN16, pressione di esercizio fino a 20 bar.

Grooved equal Tee PN16, working pressure up to 20 bar.

Art. Art.	DN	Pollici Inch	mm A	€ cad
LC127	32	1"¼	70	9,30
LC128	40	1"½	70	10,00
LC129	50	2"	70	12,30
LC130	65	2"½	76	16,70
LC131	80	3"	85,5	24,30

Art. Art.	DN	Pollici Inch	mm A	€ cad
LC132	100	4"	101	37,10
LC133	125	5"	124	79,20
LC134	150	6"	140	82,40
LC135	200	8"	175	208,30

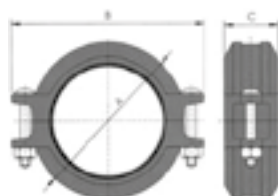


Tronchetto flangiato PN16, pressione di esercizio fino a 16 bar.

Tronchetto flangiato PN16, pressione di esercizio fino a 16 bar.

Art. Art.	DN	Pollici Inch	mm A	mm B	€ cad
LC230	50	2"	60,3	60,3	25,00
LC231	65	2"½	76,1	76,1	29,20

Art. Art.	DN	Pollici Inch	mm A	mm B	€ cad
LC232	80	3"	60,3	60,3	34,40
LC233	100	4"	76,1	76,1	45,40



Giunto ridotto PN16 con guarnizione in epdm, pressione di esercizio fino a 20 bar.

Reducing coupling PN16 with epdm gasket, working pressure up to 20 bar.

Art. Art.	DN	Pollici Inch	mm A	mm B	€ cad
LC201	65 x 50	2"½ x 2"	140	45	20,00
LC202	80 x 50	3" x 2"	168	46	23,30
LC203	80 x 65	3" x 2"½	168	46	23,30
LC204	100 x 50	4" x 2"	198	50	37,90

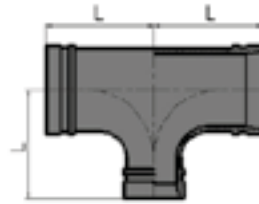
Art. Art.	DN	Pollici Inch	mm A	mm B	€ cad
LC206	100 x 80	4" x 3"	198	50	39,80
LC208	150 x 100	6" x 4"	260	51	63,20
LC209	200 x 150	8" x 6"	335	60	104,20
LC205	100 x 65	4" x 2"½	198	50	37,90

Raccorderia scanalata

Grooved piping system UL-FM

Tee ridotto scanalato PN16, pressione di esercizio fino a 20 bar.

Grooved reducing Tee. PN16, working pressure up to 20 bar.



Art. Art.	DN	Pollici Inch	mm L	€ cad
LC210	50 x 40	2" x 1"½	70	23,00
LC211	65 x 40	2"½ x 1"½	76	28,60
LC212	65 x 50	2"½ x 2"	76	30,90
LC213	80 x 40	3" x 1" ½	85,5	34,30
LC214	80 x 50	3" x 2"	85,5	37,40
LC215	80 x 65	3" x 2"½	85,5	37,60
LC216	100 x 50	4" x 2"	104	58,20
LC217	100 x 65	4" x 2"½	100	58,70
LC218	100 x 80	4" x 3"	100	59,40
LC219	125 x 50	5" x 2"	124	86,30

Art. Art.	DN	Pollici Inch	mm L	€ cad
LC220	125 x 65	5" x 2"½	124	86,30
LC221	125 x 80	5" x 3"	124	86,30
LC222	125 x 100	5" x 4"	124	86,30
LC223	150 x 80	6" x 3"	140	127,60
LC224	150 x 100	6" x 4"	140	141,60
LC225	150 x 125	6" x 5"	140	121,70
LC226	200 x 80	8" x 3"	175	263,30
LC227	200 x 100	8" x 4"	175	299,50
LC228	200 x 125	8" x 5"	175	263,30
LC229	200 x 150	8" x 6"	175	305,40

Croce scanalata PN16, pressione di esercizio fino a 34 bar.

Grooved cross PN16, working pressure up to 34 bar.



Art. Art.	Pollici Inch	mm A	€ cad
LC237	2"	70	26,60
LC238	2"½	76	33,50

Art. Art.	Pollici Inch	mm A	€ cad
LC239	3"	85,5	43,90
LC240	4"	101	71,70

Guarnizione per giunto omologata UL FM.

Coupling gasket approved UL FM.



Art. Art.	Versione Version	€ cad
LC241	Giunto - Coupling 1"	1,90
LC242	Giunto - Coupling 1"1/4	2,00
LC243	Giunto - Coupling 1"1/2	2,00
LC244	Giunto - Coupling 2"	2,10
LC245	Giunto - Coupling 2"1/2	2,80

Art. Art.	Versione Version	€ cad
LC246	Giunto - Coupling 3"	3,40
LC247	Giunto - Coupling 4"	5,40
LC248	Giunto - Coupling 5"	6,00
LC249	Giunto - Coupling 6"	7,40
LC250	Giunto - Coupling 8"	13,20

Lubrificante per giunti in barattolo.

Lubricant for coupling in jar.

Art. Art.	Kg	€ cad
LC200	0,900	99,00

